



Special Education Reopening Plan 2020-21

Contents:

Letter to Parents
Student & Staff Safety
Behavior/Hygiene Practices
Team meetings & Visitors
Transportation



Letter to Parents



CENTRAL COLUMBIA

4777 OLD BERWICK ROAD
BLOOMSBURG, PENNSYLVANIA 17815-3515

District Administration Office
570-784-2850 Ext. 4000
Fax 570-387-0192

High School & Athletic Office
570-784-2850 Ext. 3000
HS Fax 570-784-3570

Middle School Office
570-784-2850 Ext. 2000
Fax 570-784-4935

Elementary School Office
570-784-2850 Ext. 1000
Fax 570-784-2582

Parents:

Central Columbia School District is aware that many of you have questions and concerns regarding school for your child or children. For those parents who have children with disabilities, this concern can often be greater, as we know how important the consistent delivery of services is for these students. As we receive guidance from PA Department of Education and the Federal Office of Special Education Programs (OSEP), we will do our best to communicate with you any guidance we receive regarding services and timelines.

For the return to school for the 2020-2021 school year, Central Columbia School District has issued a detailed plan. As part of that plan, there will be services/resources provided specific to students with special needs. Below are a few of those specifics:

1. All students with special needs will be progress monitored within the first 4 weeks of school to determine individual progress on IEP goals & objectives.
2. Team meetings, including parents, will occur for students whose progress monitoring demonstrates significant regression.
3. Teams will revise IEPs, if necessary, to reflect changes needed in response to progress monitoring data and team input.
4. Parents can request additional team meetings at any time to discuss concerns/needs.
5. If the district returns to a virtual learning model, individual students' needs will be addressed accordingly.
6. All students in specialized classrooms will be provided the opportunity to attend school daily if the district plans for a virtual model.

Call or e-mail Christina Fish with additional questions that you may have at cfish@ccsd.cc or 570-784-2850 ext. 2426

Sincerely,
Christina E. Fish
Christina E. Fish
Dir. of Special Education

Student & Staff Safety

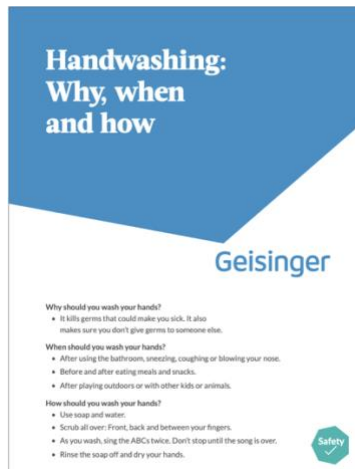


Resource	Students	Staff
Masks &/or Shields	<ul style="list-style-type: none"> • All students will be provided a cloth mask. Disposables will be available as needed. • Students are to wear masks in all school settings when social distancing cannot occur, when traveling to and from school, and when traveling in the buildings between classes. • Face shields will be provided for students with sensory and behavioral needs. 	<ul style="list-style-type: none"> • Teachers & staff will be provided with a cloth mask and a face shield. • Teachers are to wear masks when unable to socially distance. • Plexiglass shields will be provided on an as needed basis based on individual student needs.
Hand Sanitizer	<ul style="list-style-type: none"> • Will be provided in every classroom as well as stations throughout the building. • To be used whenever contact occurs or as needed. • Will be taught as a classroom expectation 	<ul style="list-style-type: none"> • Will be provided in every classroom as well as stations throughout the building. • To be used whenever contact occurs or as needed. • Will teach it as a classroom expectation

<p>Hand Washing</p>	<ul style="list-style-type: none"> • Students will be instructed on handwashing techniques 	<ul style="list-style-type: none"> • Teacher will model handwashing techniques and frequencies. • SOAR and SWPBS lessons will be utilized to instruct and retrain students.
----------------------------	-----------------------------------------------------------------------------------------------------------	-----------------------------------------------------------------------------------------------------------------------------------------------------------------------------------------------------

All students with special needs will receive the supports outlined in their Individual Education Plans. All resources necessary to keep students safe in the classroom will be provided by the school in accordance with a Free and Appropriate Public Education (FAPE). Individual student needs will be addressed on a student specific basis as determined by the student’s individual team.

Resources:



When and How to Wash Your Hands

Español (Spanish)

During the Coronavirus Disease 19 (COVID-19) pandemic, [keeping hands clean is especially important to help prevent the virus from spreading.](#)

Handwashing is one of the best ways to protect yourself and your family from getting sick. Learn when and how you should wash your hands to stay healthy.



How Germs Spread

Washing hands can keep you healthy and prevent the spread of respiratory and diarrheal infections from one person to the next. Germs can spread from other people or surfaces when you:

- Touch your eyes, nose, and mouth with unwashed hands
- Prepare or eat food and drinks with unwashed hands
- Touch a contaminated surface or objects
- Blow your nose, cough, or sneeze into hands and then touch other people's hands or common objects



Posters:



Behavior/Hygiene Practices

Students: No student with special needs will receive punitive actions for refusal to wear masks. Staff will work with individual students to assess needs and find ways to support the student with compliance of expectations. Students with special needs who have medical conditions that prevent the use of masks will be provided with shields.

Staff: Teachers will provide additional instruction and reinforcement to students on the expectations for wearing masks or shields, the use of hand sanitizer and hand washing procedures. Students who have sensory or behavioral concerns will be addressed through a behavioral assessment and a positive behavior support plan. If students exhibit behaviors that impede their learning or that of others, staff may utilize safe crisis management interventions. All documentation, parent notification and administration notification practices will continue as based on past practice.

Resources:



Team meetings & Visitors

IEP/504/Gifted/Team Meetings will be scheduled to occur in person. Parents may request to participate via virtual options or via phone conference.

Volunteers, outside agency contacts, or mental health support staff will be required to follow all district guidelines for health and safety. Requests for visitors will be considered on an individual basis.

Assessments/evaluations will occur as per all district, state and CDC guidelines. When one-to-one testing is required, the assessment will occur in an environment that allows for social distancing as much as possible. Staff conducting the assessment will wear masks and gloves (when interaction with materials is necessary). All materials will be sanitized before and after testing. All participants will practice social distancing, hand sanitizing and hand washing protocols.

Transportation

All staff and students will wear masks when traveling on school transportation.

Community based training will be limited or eliminated based on settings. Students will be allowed to opt out of any community based training activities parents do not feel safe having their child participate in based on current environment.

Any vans utilized for student transportation will be cleaned prior to and following any travel.

Vans and busses utilized for daily student travel will be sanitized following the AM and PM transportation runs.